

## Ways to Support

Pay by check  
Make Check Payable to Katherine's Light Foundation  
Mail to : 309 Locust Thorn Court, Millersville, MD 21108

Scan to donate via Paypal

Follow us on social media



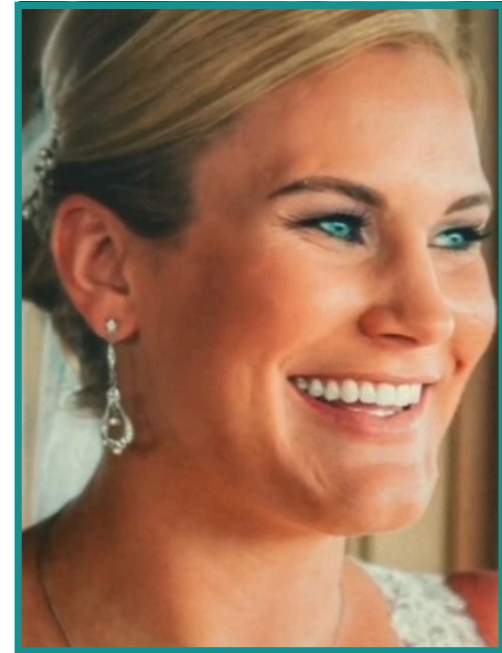
**SAVE THE DATE**

**All-Day Music Festival**  
**Saturday, June 13<sup>th</sup>, 2026**  
**12pm-8pm**  
**Severna Park Taphouse**

Katherine's Light is a 501(c)3 nonprofit organization  
IRS EIN# 93-2389250

2025

# Impact Report



One light. Countless lives touched.  
Celebrating our second year of impact.

**Since 2023, we've raised \$210,313!!!**



"Katherine's Light continues to shine through your work in every breakthrough advance, every patient supported, and every step taken toward better treatments and cures."

– Susie Harrington, NETRF



# Katherine's Light Foundation

Founded by Robin and Larry Sells - 2023

## Our Mission

In the spirit of Katherine's positive attitude and determination, the Katherine's Light Foundation seeks to shine her light through many non-profit organizations that provide education, awareness, research, support and wellness services to those on a cancer journey.



## Note from Larry and Robin Sells

We are pleased to share the **2025 Katherine's Light Foundation Impact Report** with our supporters. None of this work or the level of impact reflected here would be possible without the generous investment of our donors, sponsors, and volunteers; from the bottom of our hearts, thank you for honoring Katherine's memory in such a meaningful and lasting way.

In Gratitude,

*Robin & Larry*

**\$210,313** raised in our first 2 years

**95¢** of every dollar goes directly to mission impact

# Thank you to our Sponsors

## Platinum

- o The Cottage

## Event

- o Deep Eddy Vodka
- o DJ Brian Austin
- o George Evans
- o iHeart Radio
- o Priddy Music Academy
- o Severna Park Taphouse
- o Thibodeau Media Group

## Gold

- o Cynthia & Sandy McWilliams
- o Dawn & David Orso
- o Jo-Lee Mufflers - Annapolis
- o KMA Law Office
- o Midas - Annapolis
- o Midas - Pasadena
- o Severna Park Kitchen & Bath

## Silver

- o Landmark Roofing
- o Mary & Matt Jermann

## Bronze

- o Alexander Animal Hospital
- o Anita & Carl Gutschick
- o Betty & Don Holck
- o Donna & Bob O'Neill
- o Eagle Title
- o Kris and Pat Patel
- o LaBarge Financial
- o Luminis Health
- o Moran Insurance
- o Munoz Estates and Trust
- o Nancy & Jesse Boyd
- o Phelps Water Co.
- o Robin and Larry Sells
- o Savannah Community Foundation
  - McWilliams, Fern, & Sells Family
- o Savvy Consignment
- o ServPro/Diane Whittles
- o Severna Park Automotive
- o Severna Park Lanes
- o University of Maryland Baltimore Washington Medical Center
- o Vera & Hal Murnane

## Lighthouse

- o Aaron Hockel
- o Capri Pizza & Sub Express
- o Checkmark Power Washing
- o Cynthia & Michael Price
- o Ellen & Scott Kleinknecht
- o Fence & Deck Connection
- o Gwen & Bill Chalmers
- o Himmel's Landscape & Garden Center
- o Huff Insurance
- o Jeffrey Armiger
- o Katie and Andy Borland
- o Margaret Doane
- o Pamela & Duke Brizzolara
- o Patricia and Paul Brandenburg
- o Susan Kelley Stevenson
- o 50 East

## Shining Lights

- o Delegate Heather Bagnall
- o E. L. & Company
- o John & Priscilla Rosso
- o Karen & George Hepburn
- o Paul Harris
- o Phelps Water Co.
- o Randi Berger
- o Robert Lessner
- o Rutzen Eye Specialists & Laser Center
- o Sandy & Kay Childs
- o Sarah Elder
- o Senator Dawn Gile
- o Shore United
- o State Farm Insurance/Lee Talbot
- o Truseal Asphalt & Concrete
- o Wright Orthodontics

Thank you to all who supported our live, silent, and raffle auctions with generous donations. Your support helped make our impact possible.

Katherine's Light Foundation  
Founded by Robin and Larry Sells - 2023

# “We Will Do What We Say We Will Do”

-Larry Sells, President of Katherine's Light Foundation



## Board of Directors

Our volunteer, non-compensated board of directors dedicate their time, expertise, community networks and financial resources towards the success of Katherine's foundation



- Larry Sells** - President & Co-Founder
- Robin Sells** - Co-Founder & Director
- Michael Hall** - Vice President
- Jessica Tinordi** - Treasurer
- Susan Payson** - Secretary
- Matt Mueller** - Director
- Sandy McWilliams** - Director
- Amanda Shields** - Director

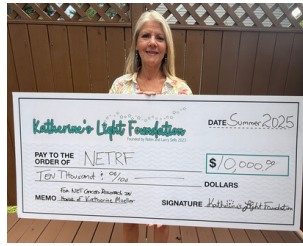
## Our Investments

- Neuroendocrine Tumor Research Foundation (NETRF), Boston, MA
- Baltimore Washington Medical Center Foundation, Glen Burnie, MD
- Wellness House of Annapolis, Annapolis, MD
- Anne Arundel Community College Foundation, Arnold, MD
- Luminis Health - Anne Arundel Medical Center Foundation, Parole, MD
- Mercy Medical Center, Baltimore, MD
- Serving People Across Neighborhoods (SPAN), Severna Park, MD

## Neuroendocrine Tumor Research Foundation (NETRF), Boston MA

2025 Donation \$10,000  
KLF Cumulative Support - \$41,813

Research led by Dr. Tanya Stoyanova, made possible through your support, identified a protein called UCHL1 that is present at high levels in neuroendocrine tumor tissue. Laboratory studies further demonstrated that **blocking UCHL1 slowed tumor growth** and reduced the spread of cancer cells, highlighting its functional role in disease progression. These findings suggest that UCHL1 has strong potential to serve as both a diagnostic marker and a potential **new target for treatment** in neuroendocrine tumors. This work shows the value of continued investment in innovative research and represents a meaningful step forward in improving diagnosis and treatment options for patients with neuroendocrine tumors.



## Mercy Medical Center, Baltimore, MD

2025 Donation \$23,000  
KLF Cumulative Support - \$28,000

Over the past year, **four NET patients** qualified for assistance that removed financial and logistical barriers so they could continue essential care. This support eased stress during treatment, helping patients focus on healing and **improving their quality of life**.

Funds were used to support:

Specialized **medical transportation** to ensure access to essential testing and treatment

Coverage of treatment-related **co-pays** and **outstanding medical balances**

Assistance with **basic living expenses**, including home heating and utility costs during treatment



## Anne Arundel Community College Foundation, Arnold, MD

2025 Donation \$15,000  
KLF Cumulative Support - \$30,000

April Gray is the first Katherine Mueller Nursing Scholarship Award winner at Anne Arundel Community College and is more than halfway through her journey to becoming a nurse. In a heartfelt letter, she expressed her gratitude to Katherine's Light Foundation for supporting her through her nursing journey and shared how truly honored she feels to have been chosen. She stated that it is because of this generosity that she is able to take on this journey with **less stress and more love and support**. She also noted the impact the scholarship has had on her well-being, writing, "Knowing that I can focus more on my studies has been both a mental and physical relief."

"It is because of how beautiful Katherine lived her life, that I feel more supported than ever! I feel the light surrounding me and I hope to continue to thrive through each semester to come."  
April Gray



## Wellness House of Annapolis, Annapolis MD

2025 Donation \$16,000  
KLF Cumulative Support - \$41,000

On June 30, 2025, Wellness House received a \$16,000 donation, which directly funded:

- **90 support group hours**
- **58 individual counseling sessions**
- **Access to critical mental health care** during a time of growing need.

This support has helped strengthen Wellness House's counseling capacity by **reducing wait times, expanding our team of licensed professionals, and introducing evidence-based programs** such as music therapy and equine therapy. These services are part of more than 50 programs across five pillars of care: Mental Health, Health & Wellness, Children & Family, Social Support, and Education. Looking ahead, Katherine's Light Foundation's continued investment allows Wellness House to personalize care through enhanced intake assessments, counseling cohorts, and customized wellness plans, ensuring members receive the right support at the right time. Together, we are expanding access, improving outcomes, and meeting the evolving mental health needs of individuals and families impacted by cancer.

## Baltimore Washington Medical Center Foundation, Glen Burnie, MD

2025 Donation \$10,000  
KLF Cumulative Support - \$31,500



In 2025, Katherine's Light Foundation's continued support of the Tate Cancer Center's Patient Care and Comfort Program (PCCP) helped improve the lives of **99 patients** by addressing critical needs beyond medical treatment.

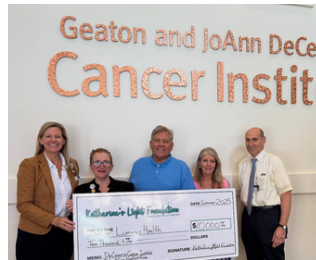
- **600+ rides** to and from cancer treatments and medical appointments
  - **35 grocery gift cards** and **5 restaurant gift cards**
  - Direct assistance with unreimbursed patient needs, including **medical supplies, compression garments, and wigs**
- Additionally, this funded the **holiday lighting** in the Healing Garden, offering chemotherapy and infusion patients a comforting and uplifting view during early mornings and late afternoons.

## Luminis Health - Anne Arundel Medical Center, Parole, MD

2025 Donation \$20,000  
KLF Cumulative Support - \$30,000

In 2025, our donations enabled The DeCesaris Cancer Institute at Luminis Health with the most common social determinants of health affecting cancer patients and their outcomes.

- **Food and groceries** for families in crisis
- **Gas cards** that helped patients reach treatment
- **Over 60 Lyft rides** taking patients safely to chemotherapy and radiation.
- **Housing support** that prevented eviction or homelessness
- **Utility and phone assistance** to keep patients connected to care
- Breast, Prostate, Endometrial, Cervical, and Lung Cancer Patients were the most frequently served.



## Serving People Across Neighborhoods (SPAN), Severna Park, MD

2025 Donation \$6,000  
KLF Cumulative Support - \$8,000

This year, our donation to SPAN helped a local family remain in their home during a medical crisis. When a family member was hospitalized for over a month with a serious cancer diagnosis and unable to work, the household fell behind on **utility payments** and faced an imminent power shutoff. SPAN provided direct financial assistance and connected the family with additional support services, ensuring their electricity remained on during a critical time. This support allowed the family to focus on health and recovery rather than the loss of essential utilities.



Katherine's Light Foundation  
Founded by Robin and Larry Sells - 2023